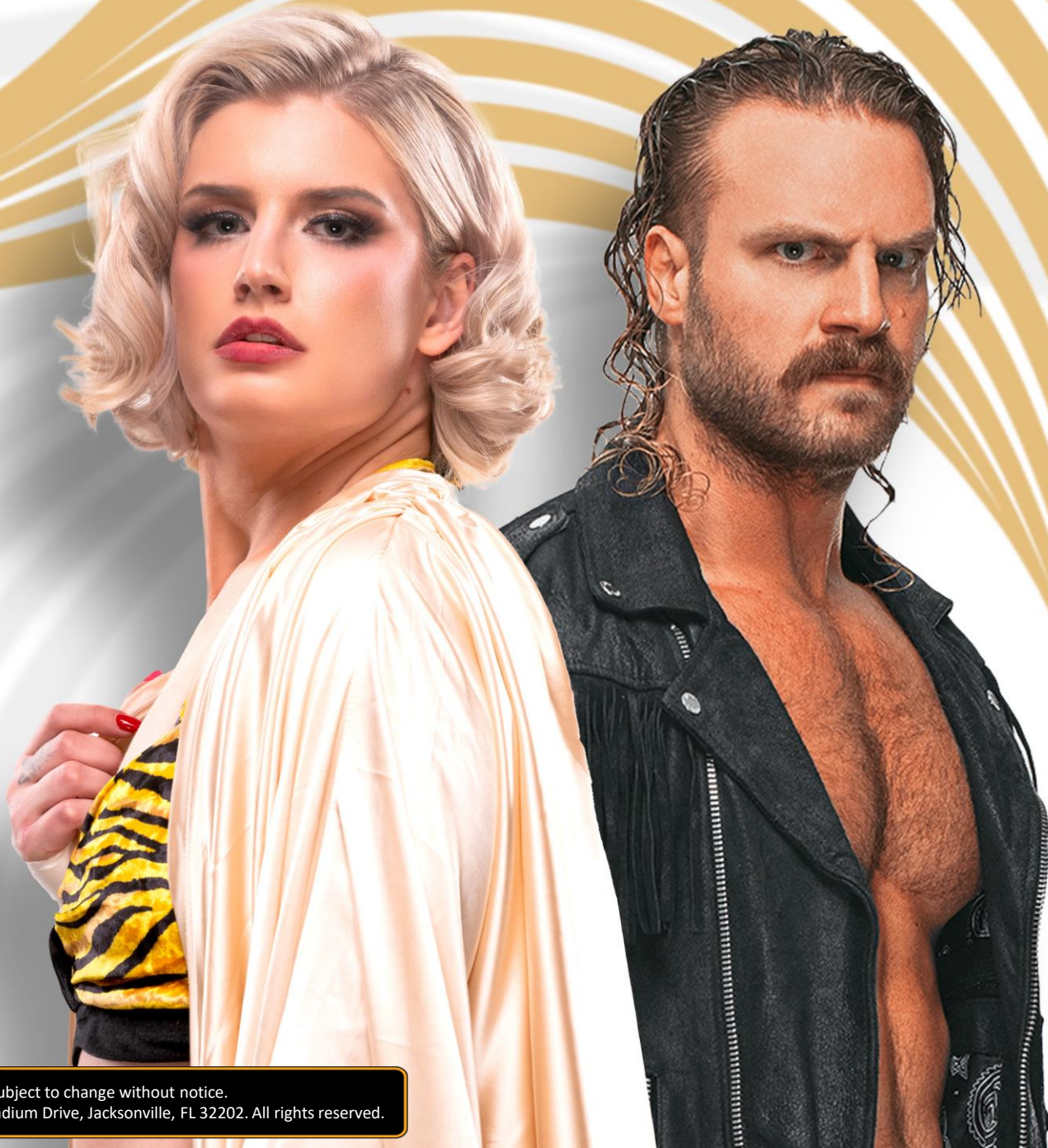


AEW®

SP
SIGNATURE
EDITION®
HOBBY



Product depicted for demonstration purposes only and is subject to change without notice.
© 2025 The Upper Deck Company. © 2025 All Elite Wrestling, LLC. 1 EverBank Stadium Drive, Jacksonville, FL 32202. All rights reserved.

AEW SP SIGNATURE EDITION

PRODUCT HIGHLIGHTS

THE FIRST-EVER AEW SP SIGNATURE EDITION RELEASE!

OUTSTANDING CHECKLISTS

- Icons
- Current & Former Champions
- Rising Stars
- Fan Favorites

AUTOGRAPHS!

- One (1) Autograph Card per Pack
- Two (2) Multi-Signed Autograph Cards per Case
- Three (3) Hard-Signed Autograph Cards per Case

NUMBERED CARDS

- One (1) Base Set Card #’d to 249 per Pack
- One (1) Base Set Parallel Card #’d Between 99 and 1-of-1 per Pack



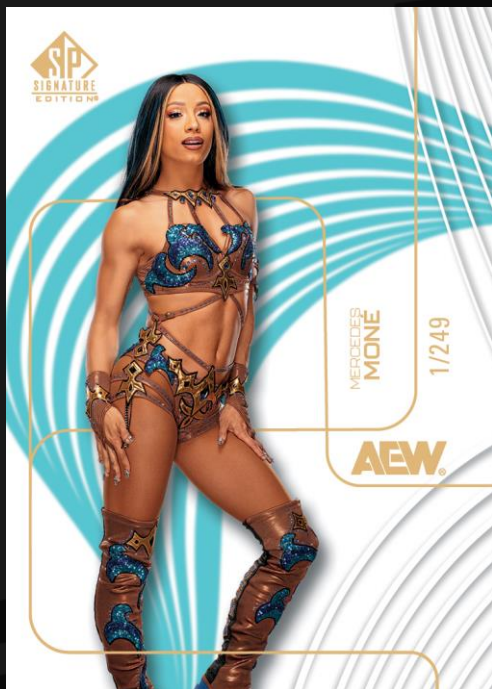
Content is subject to change without notice. Per pack & case numbers are “on average”.

AEW SP SIGNATURE EDITION

THE BASE SET

The 100-card **Base Set** includes wrestling icons, current and former champions, rising stars and fan favorites. Every card is numbered to 249! Collect one (1) per pack, on average! From the Red parallel (#'d) to the 1-of-1 Black and Black Auto parallels, the extensive parallel lineup is loaded with chase cards! Collect one (1) numbered non-auto parallel per pack, on average!

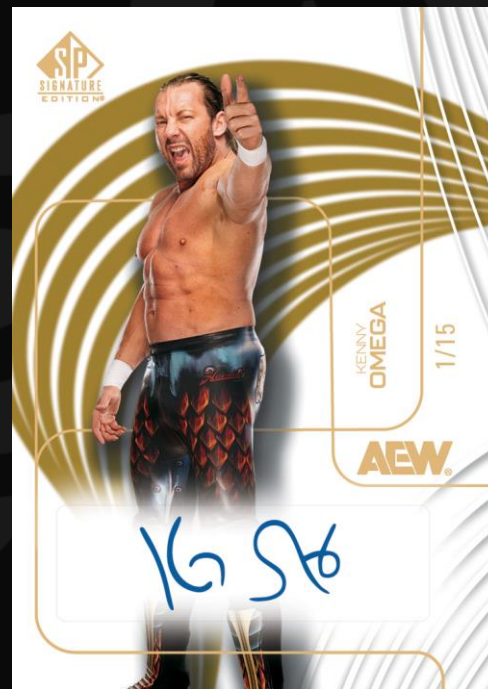
All Base Set cards, including parallels, boast the features collectors love about the SP Signature Edition brand: a large white background; a popped-out image; a single-color design element; and deco foil - including linework.



BASE SET



BASE SET
Orange Parallel



BASE SET
Gold Auto Parallel



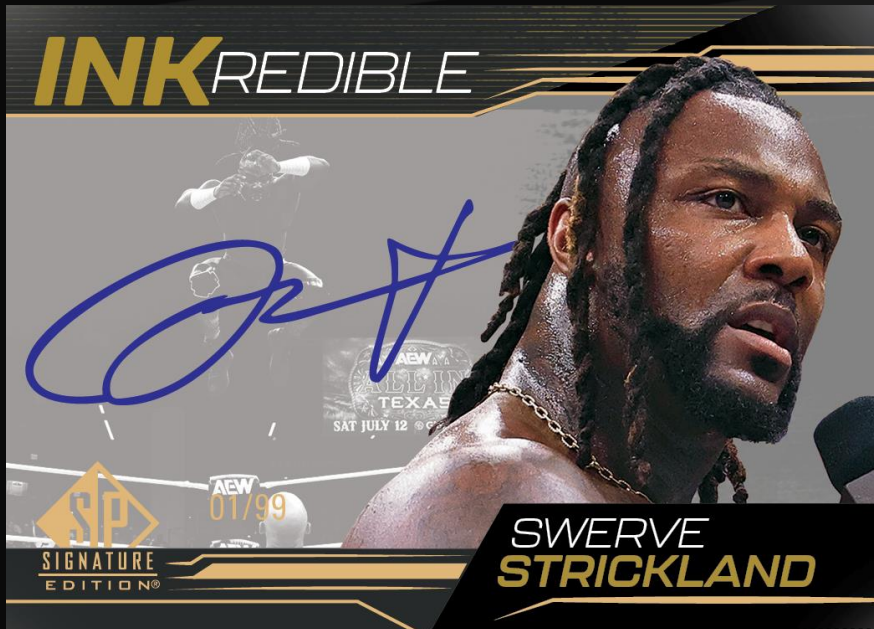
Content is subject to change without notice. Card images are solely for the purpose of design display and are subject to change (including wrestlers featured) without notice.

AEW SP SIGNATURE EDITION

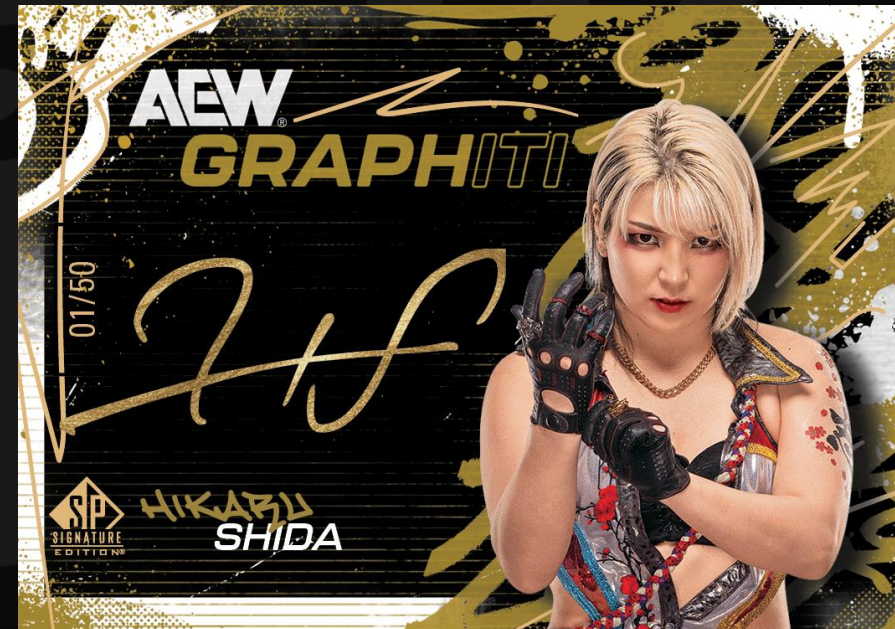
THE INSERTS

AUTOGRAPHS!

All of the insert sets in this special AEW release sport autographs – some of which are hard-signed!
Collect one (1) autograph card per pack, on average!



AEW INKredible



AEW GRAPHiti

Both are numbered hard-signed autograph sets full of superstars!



Content is subject to change without notice. Card images are solely for the purpose of design display and are subject to change (including wrestlers featured) without notice.

AEW SP SIGNATURE EDITION

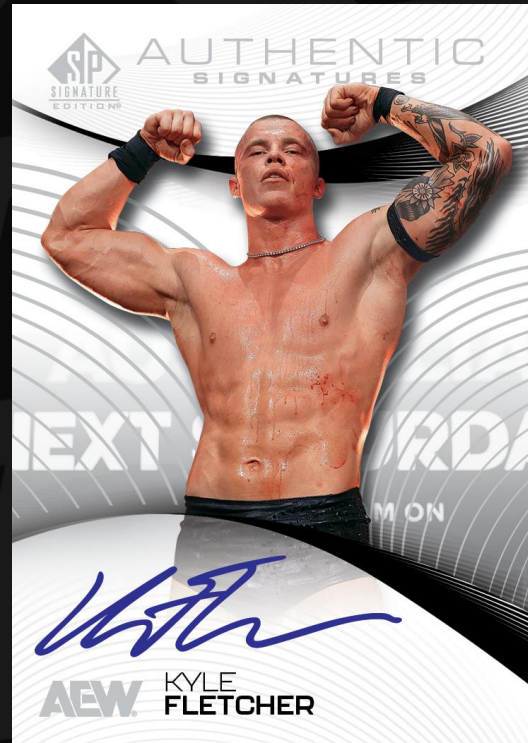
THE INSERTS



ANGLES

This is a dual-label autograph set featuring wrestlers that have squared off in the ring.

Wrestling fans will love the pairings!



AUTHENTIC SIGNATURES

Cards from this classic hard-signed autograph set fall one (1) in every five (5) packs, on average!



SIGNATURE TRIPLES

Keep an eye of for numbered **Signature Duals** (top tag teams or superstars), **Triples** (top trios or superstars) and **Quads** cards!



Content is subject to change without notice. Card images are solely for the purpose of design display and are subject to change (including wrestlers featured) without notice.

AEW SP SIGNATURE EDITION

CONFIGURATION & BOX BREAK

CONFIGURATION

1

Pack per Box

3

Cards per Pack

BOX BREAK

ON AVERAGE

1

Autograph Card

1

Base Set Card

#'d to 249

1

Base Set Parallel Card

#'d between 99 and 1-of-1



Content is subject to change without notice.